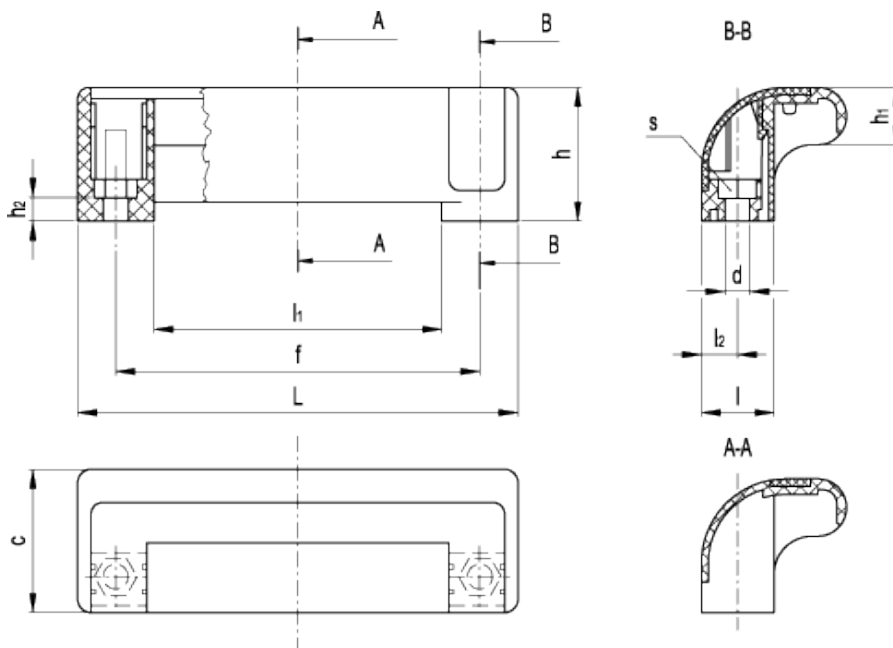


# M.990

Guard safety handles



FM Design



## technical informations

### Material

Polyamide based (PA) technopolymer. Resistant to solvents, oils, greases and other chemical agents.

### Colour

Black, matte finish.

### Screw cover

Technopolymer in standard colours: RAL 9005 black, RAL 2004 orange, RAL 7035 grey, RAL 1021 yellow, RAL 5024 light-blue, RAL 3000 red, matte finish, snap-in assembly, removable.

## Assembly

Through holes for cylindrical-head screws with hexagon socket, hexagonal-head screws or standard lock nuts.

## Features and applications

M.990 handles have been especially designed to fit machines guards or automation systems with double-leaf door. The special closed design of the handle represents a safety element for the operator's fingers. Moreover, the coloured cover improves the visibility of the handle and offers the possibility of product customisation.

C2 RAL 2004 C3 RAL 7035 C4 RAL 1021 C5 RAL 5024 C6 RAL 3000 C9 RAL 9005

Standard Elements		Main dimensions								Mounting holes			Weight
Code	Description	L	f ±0.5	h	c	l	l <sub>1</sub>	l <sub>2</sub>	h <sub>1</sub>	d	h <sub>2</sub>	s	g
138511	M.990/115 EH-6-C9	115	95.5	35	37.5	19	75.5	9.5	15	6.5	6	10	33
138512	M.990/115 EH-6-C2	115	95.5	35	37.5	19	75.5	9.5	15	6.5	6	10	33
138513	M.990/115 EH-6-C3	115	95.5	35	37.5	19	75.5	9.5	15	6.5	6	10	33
138514	M.990/115 EH-6-C4	115	95.5	35	37.5	19	75.5	9.5	15	6.5	6	10	33
138515	M.990/115 EH-6-C5	115	95.5	35	37.5	19	75.5	9.5	15	6.5	6	10	33
138516	M.990/115 EH-6-C6	115	95.5	35	37.5	19	75.5	9.5	15	6.5	6	10	33



ELESA and GANTER models all rights reserved in accordance with the law. Always mention the source when reproducing our drawings.

STANDARD MACHINE ELEMENTS WORLDWIDE